

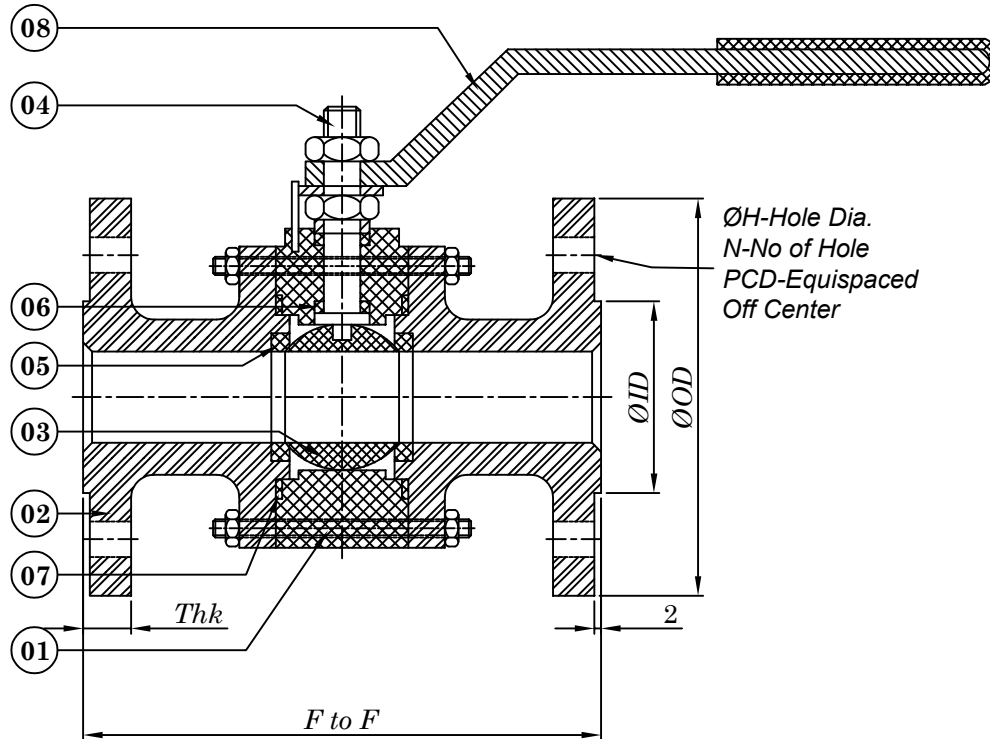
HYDRAULIC TEST PRESSURE

BODY	SEAT
31 Kg/Cm ²	21 Kg/Cm ²

DIMENSIONS

MM	F to F	THK	ØID	ØD	ØH	N	PCD
15mm	108.0	10.0	35	89.0	16	4	60.4
20mm	118.0	10.5	43	98.5	16	4	70.0
25mm	127.0	11.0	51	108.0	16	4	79.2
40mm	165.1	14.2	73	127.0	16	4	98.5
50mm	178.0	15.7	92	152.0	19	4	120.6
65mm	191.0	17.5	105	178.0	19	4	139.7
80mm	203.0	19.0	127	190.5	19	4	152.4
100mm	229.0	24.0	157	229.0	19	8	190.5
125mm	254.0	24.0	186	254.0	22	8	215.9
150mm	267.0	25.0	216	279.0	22	8	241.3
200mm	292.0	28.5	270	343.0	22	8	298.4
250mm	330.0	30.0	324	406.0	25	12	362.0


(DIMENSIONS ABOVE 250 MM AVAILABLE ON REQUEST)



No.	Description	Material
01	Body	ASTM A 216 Gr. WCB/A351CF8/A351CF8M
02	Side Piece	ASTM A 216 Gr. WCB/A351CF8/A351CF8M
03	Ball	CF8 / CF8M
04	Stem	AISI 304/AISI 316
05	Seat Ring	PTFE/CFT/RPTFE/VERGIN-PTFE/GFT/DEVLON/VITON
06	Stem Seal	PTFE/CFT/RPTFE/VERGIN-PTFE/GFT/DEVLON/VITON
07	Body Seal	PTFE/CFT/RPTFE/VERGIN-PTFE/GFT/DEVLON/VITON
08	Wrench	M.S/S.S. With Flexible PVC Sleeve

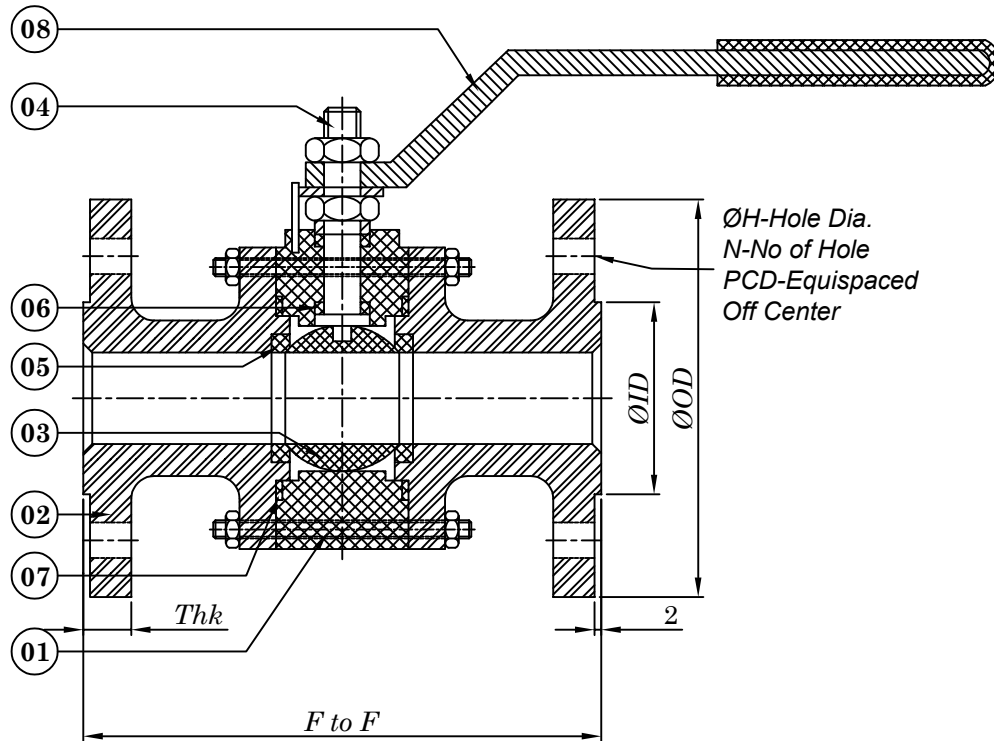
TECHNICAL INFORMATION:-

DESIGNE AND MANUFACTURING : BS:5351
 INSPECTION & TESTING : API:598
 VALVE FACE TO FACE : ASME B 16.10
 END CONNECTION : as per ASME B 16.5 150#

INFO:- 3.Pc Ball Valve, Flanged Ends, 150#	 PERFECT ALLOY VALVES <small>TALUKA:-SANAND DISTRICT:-AHMEDABAD 382210</small>	
QUOTATION.NO:-	DRN	
Tolerance:-±3mm	CHKD	
ALL DIMENSION ARE IN M.M.	APPD.BY	
	DWG NO:	PAV/3PC/150#/FE/01

HYDRAULIC TEST PRESSURE

BODY	SEAT
80 Kg/Cm ²	60 Kg/Cm ²



ØH-Hole Dia.
N-No of Hole
PCD-Equispaced
Off Center

DIMENSIONS


MM	F to F	THK	ØID	ØOD	ØH	N	PCD
15mm	140.0	14.3	35	95.0	16	4	66.5
20mm	152.0	15.7	43	117.0	19	4	82.5
25mm	165.0	17.5	51	124.0	19	4	89.0
40mm	190.5	20.5	73	155.4	22	4	114.3
50mm	216.0	22.0	92	165.0	19	8	127.0
65mm	241.0	25.0	105	190.5	22	8	149.3
80mm	282.5	28.0	127	209.5	22	8	168.1
100mm	305.0	32.0	157	254.0	22	8	200.1
125mm	381.0	35.0	186	279.0	22	8	234.9
150mm	403.0	36.5	216	317.5	22	12	269.7
200mm	419.0	41.0	270	381.0	25	12	330.2
250mm	457.0	48.0	324	444.5	29	16	387.3

(DIMENSIONS ABOVE 250 MM AVAILABLE ON REQUEST)

TECHNICAL INFORMATION:-

DESIGNE AND MANUFACTURING : BS:5351
 INSPECTION & TESTING : API:598
 VALVE FACE TO FACE : ASME B 16.10
 END CONNECTION : as per ASME B 16.5 300#

No.	Description	Material
01	Body	ASTM A 216 Gr. WCB/A351CF8/A351CF8M
02	Side Piece	ASTM A 216 Gr. WCB/A351CF8/A351CF8M
03	Ball	CF8 / CF8M
04	Stem	AISI 304/AISI 316
05	Seat Ring	PTFE/CFT/RPTFE/VERGIN-PTFE/GFT/DEVLON/VITON
06	Stem Seal	PTFE/CFT/RPTFE/VERGIN-PTFE/GFT/DEVLON/VITON
07	Body Seal	PTFE/CFT/RPTFE/VERGIN-PTFE/GFT/DEVLON/VITON
08	Wrench	M.S./S.S. With Flexible PVC Sleeve

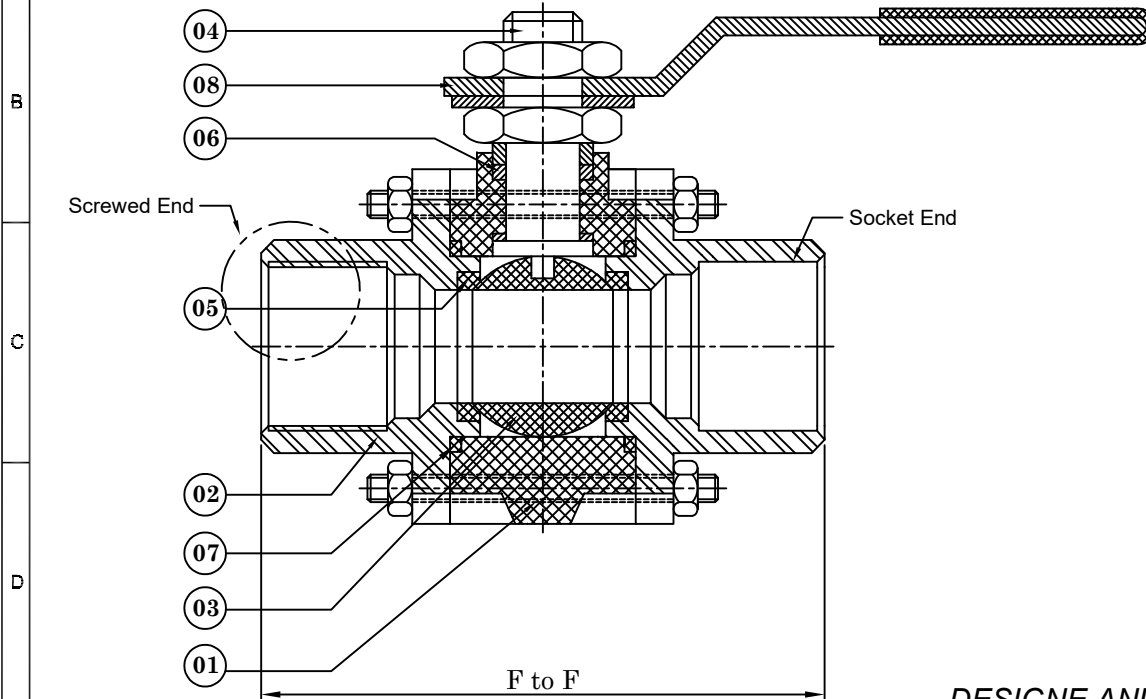
INFO:- 3.Pc Ball Valve, Flanged Ends, 300#	 PERFECT ALLOY VALVES <small>TALUKA:-SANAND DISTRICT:-AHMEDABAD 382210</small>	
QUOTATION.NO:-	DRN	
Tolerance:-±3mm	CHKD	
	APPD.BY	
ALL DIMENSION ARE IN M.M.	DWG NO:	PAV/3PC/300#/FE/02

HYDRAULIC TEST PRESSURE

BODY	SEAT
210 Kg/Cm ²	140 Kg/Cm ²

DIMENSIONS


MM	F to F
15mm	68.0
20mm	79.0
25mm	95.0
40mm	117.0
50mm	130.0



TECHNICAL INFORMATION:-

DESIGNE AND MANUFACTURING : BS : 5351 , API 602
 INSPECTION & TESTING : API:598
 SOCKET WELD AND THREADED TO : ANSI B 16.11 /ANSI B 1.20.1
 END CONNECTIONS : BSP,NPT,BSPT, SOCKET WELD

No.	Description	Material
01	Body	Forged Steel (ASTM A 105)
02	Connector	Forged Steel (ASTM A 105)
03	Ball	CF8
04	Stem	AISI 304
05	Seat Ring	PTFE
06	Stem Seal	PTFE
07	Body Seal	PTFE
08	Wrench	M.S with Flexible PVC Sleeve

INFO:- Forged Steel 3.Pc Ball Valve, Socket Weld / Screwed Ends,800#		 PERFECT ALLOY VALVES TALUKA:-SANAND DISTRICT:-AHMEDABAD 382210
QUOTATION.NO:-	DRN	
Tolerance:-±3mm	CHKD	
ALL DIMENSION ARE IN M.M.	APPD.BY	
	DWG NO:	PAV/3PC/800#/SW-SE/04